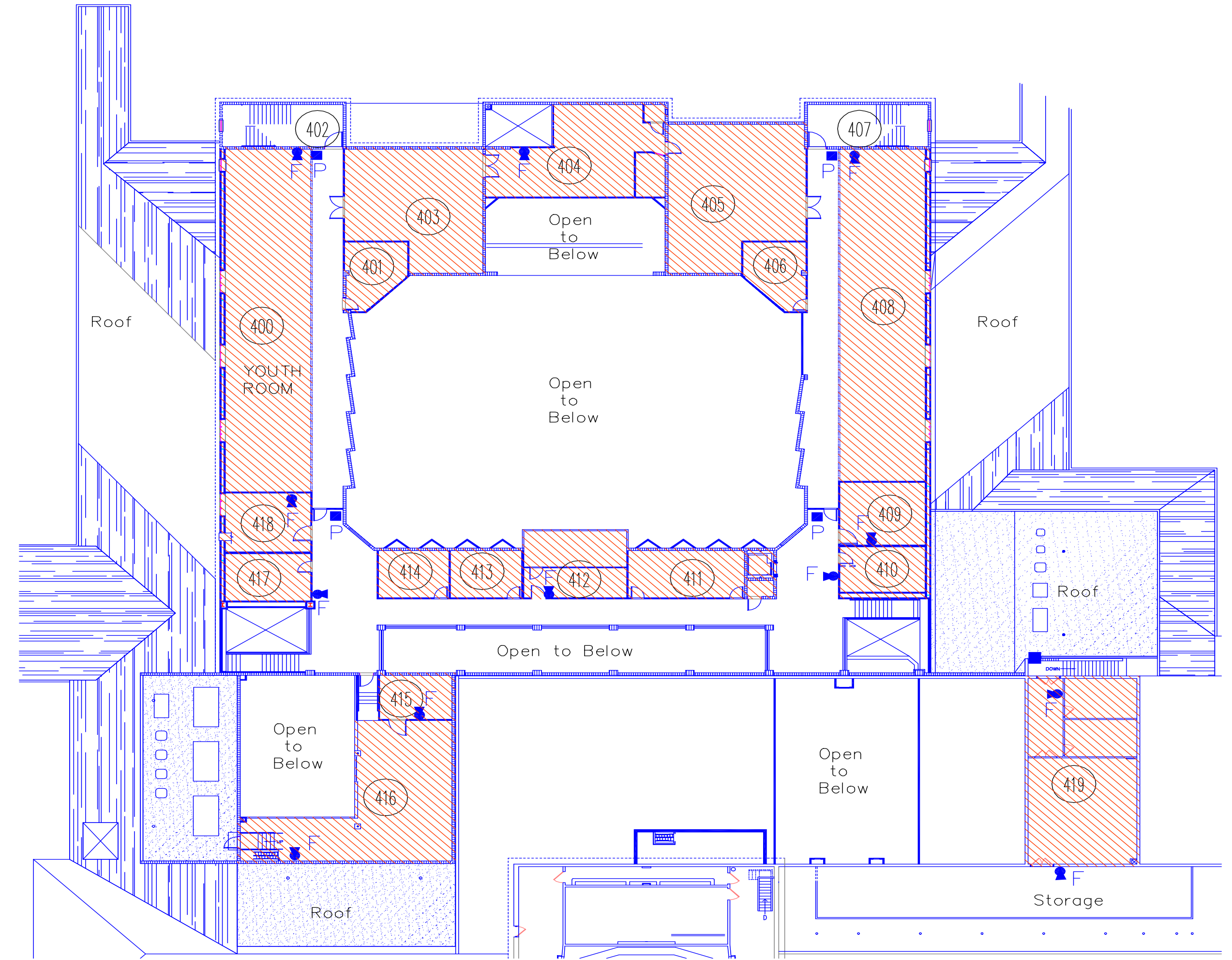


FIRST FLOOR



SECOND FLOOR

FIRST & SECOND FLOOR ROOM DIRECTORY

**- 1ST FLOOR
RED ZONE**

- 100. Reception Area
- 101. Admin. Assistant
- 102. Financial Assistant
- 103. Dir. of Administration
- 104. Computer & Storage
- 105. Associates Office
- 106. Associate Pastor
- 107. Pastors Ex. Secretary
- 108. Senior Pastor
- 109. Dir. of Christian Ed.
- 110. Coord. of Older Adults
- 111. Dir. of Communications
- 112. Mission Coordinator
- 113. First Aid Equip. Room
- 114. Ladies Restroom
- 115. Mens Restroom
- 116. Sextons Office
- 117. HVAC Controls
- 118. Building Maint.
- 119. Communications
- 120. Storage
- 121. Parlor
- 122. Comm. Resource
- 123. Conference
- 124. Staff Lounge
- 125. Mens Restroom
- 126. Ladies Restroom
- 127. Office
- 128. Music Library
- 129. Music Director
- 130. Bells, Childrens Church, & Choir
- 131. Office
- 132. Office
- 133. Adult Choir
- 134. Mens Robing
- 135. Ladies Robing
- 136. Sound Engineer
- 137. Archives Storage
- 138. Work Room
- 139. Library

**- 1ST FLOOR
GREEN ZONE**

- 200. Nursery Reception
- 201. Nursery Office
- 202. Mens Restroom
- 203. Ladies Restroom
- 204. Awake & Sleeping Babies
- 205. One Year Olds
- 206. Storage
- 207. Three Year Olds
- 208. Two Year Olds
- 209. Maint. Storage
- 210. Elem. A.V. Classroom
- 211. Elem. Art Classroom
- 212. Resource
- 213. Breakroom/Laundry
- 214. Four Year Olds
- 215. Classroom
- 216. Kindergarten
- 217. Mens Restroom
- 218. Ladies Restroom
- 219. Classroom
- 220. Classroom
- 221. Classroom
- 222. Classroom
- 223. Mens & Ladies Restrooms
- 224. Classroom
- 225. Handicap Restroom
- 226. Lounge
- 227. Elem. Drama Classroom
- 228. Elem. Music Classroom
- 229. Computer Room

**- 1ST FLOOR
BLUE ZONE**

- 300. Storage
- 301. Ladies Rest & Showers
- 302. Mens Rest. & Showers
- 303. Storage
- 304. Unloading Dock
- 305. Stage Storage
- 306. Dressing Room
- 307. Dressing Room
- 308. Kitchen
- 309. Dry Storage
- 310. Kitchen Office
- 311. Scullery
- 312. Mens & Womens Restroom
- 313. South East Exit Stairway
- 314. Main Elec Switch Room
- 315. Storage Room
- 316. Multi-Purpose Room
- 317. Multi-Purpose Room
- 318. Multi-Purpose Room
- 319. Storage-Table & Chairs
- 320. Elevator
- 321. Meeting/Classroom
- 322. Meeting/Classroom
- 323. Meeting/Classroom
- 324. Craftroom
- 325. Welcome Desk
- 326. C.E. Assistant
- 327. Control Room
- 328. Dir. of Student Life Min.
- 329. Vine
- 330. Assist. Dir. of Student Life
- 331. Youth Fellowship
- 332. Storage Room
- 333. Exercise Room
- 334. Levi's Oasis
- 335. North East Exit Stairway

**- 2ND FLOOR
ORANGE ZONE**

- 400. Senior High Fellowship
- 401. Projection Room
- 402. North East Stairs
- 403. Future Classroom
- 404. Fine Arts Storage
- 405. Future Classroom
- 406. Projection Room
- 407. South East Stairs
- 408. Future Classroom
- 409. Mech. Room
- 410. Ladies Restroom
- 411. Meeting Room
- 412. Master Control Room
- 413. Parish Psychologist
- 414. Stephen Ministry
- 415. Mech. Room
- 416. Fine Arts Office
- 417. Mens Rest Room
- 418. Mech. Room
- 419. The Rock-Storage Room